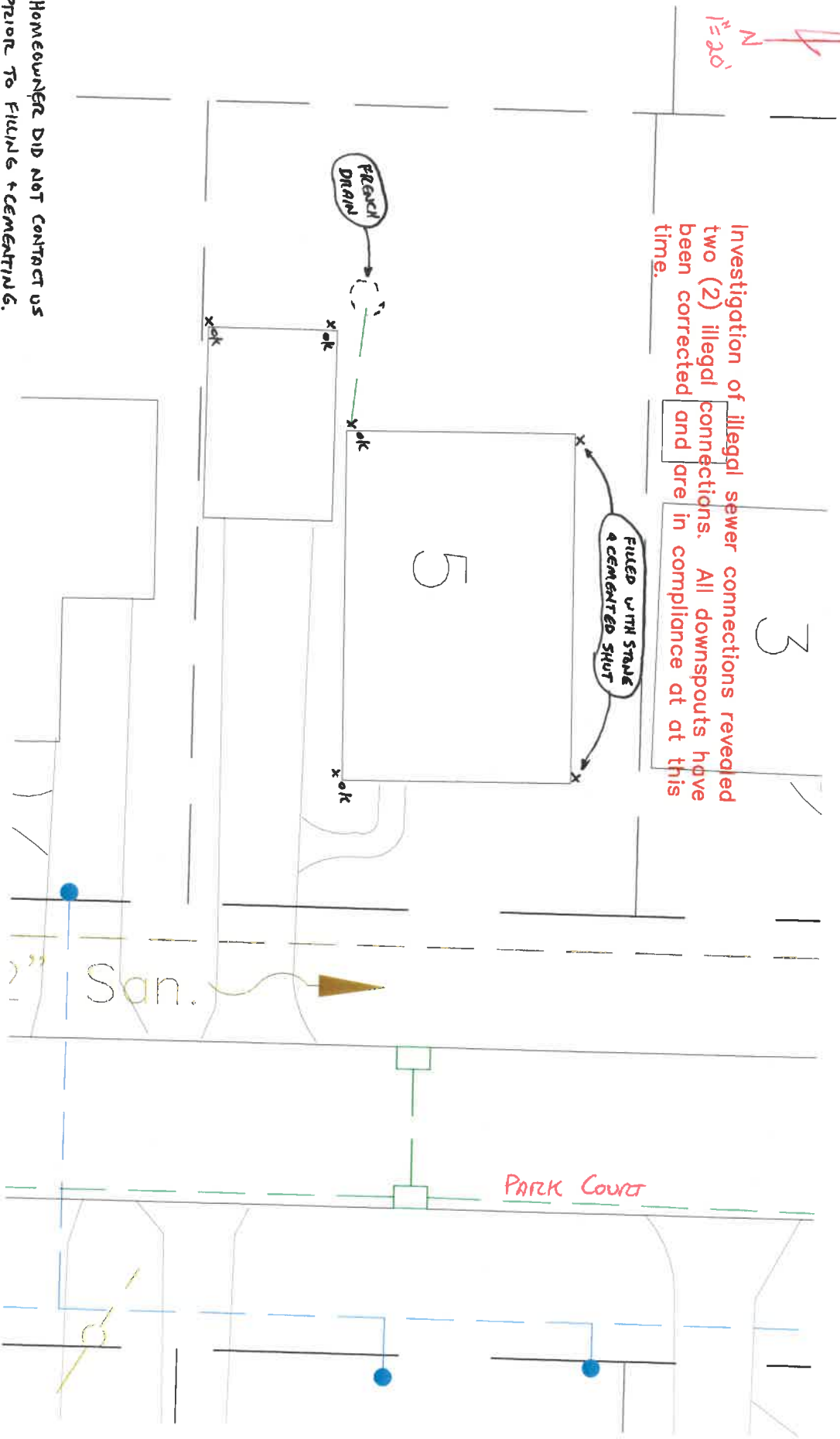


5 PARK COURT

2015  
N  
1"=20'

Investigation of illegal sewer connections revealed two (2) illegal connections. All downspouts have been corrected and are in compliance at at this time.



HOMEOWNER DID NOT CONTACT US PRIOR TO FILING & CEMENTING. FILING PIPES WAS NOT RECOMMENDED.